

Determining Pocket Watch Quality

For Assessing Value



Points For Evaluation

Size

Case

Dial

Hands

Winding

Movement

Repair/Restoration

Should I Bid/Buy

Size

What size watch Are You Considering?

Different sizes can have different values

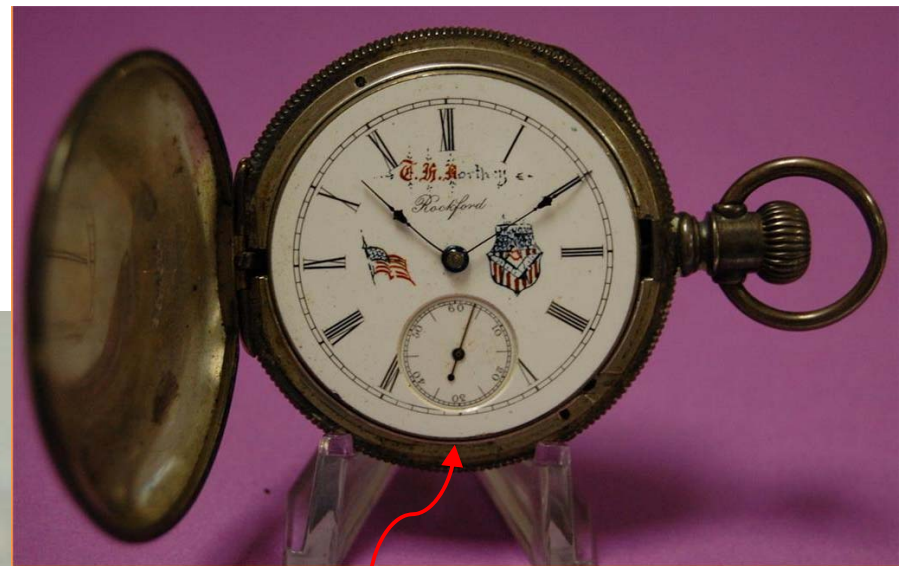
Should you care?

- 18 size or greater
- 16s
- 14s
- 12s



Case – Observations

- Complete – bow, stem, covers, bezel



No bezel

Case – Observations

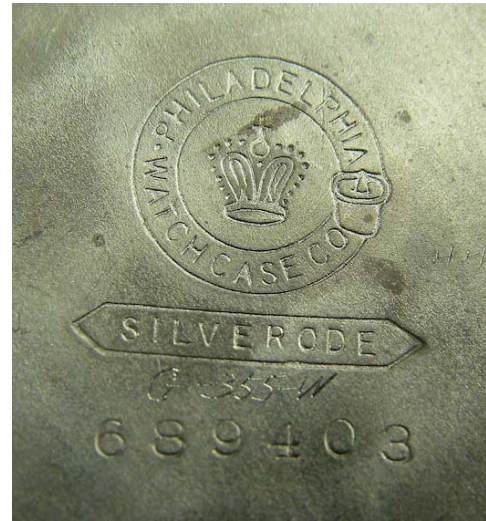
- Complete – bow, stem, covers, bezel
- Material – gold, silver, coin, aluminum, etc.



White gold



Yellow gold



aluminum



Multi color

Case – Observations

- Complete – bow, stem, covers, bezel
- Material – gold, silver, coin, aluminum, etc.
- Detail – Desirability of design



Case – Observations

- Complete – bow, stem, covers, bezel
- Material – gold, silver, coin, aluminum, etc.
- Detail – Complexity of design
- Wear – Experience counts



What are you willing to accept?

Case – Observations

- Complete – bow, stem, covers, bezel
- Material – gold, silver, coin, aluminum, etc.
- Detail – Complexity of design
- Wear – Experienced judgment helpful
- Scratches – detracting, acceptable



Magnification will amplify

Case – Observations

- Complete – bow, stem, covers, bezel
- Material – gold, silver, coin, aluminum, etc.
- Detail – Complexity of design
- Wear – Experienced judgment helpful
- Scratches – major, minor, detracting, not noticeable
- Dents/Dings/other – major, minor, detracting, repairable



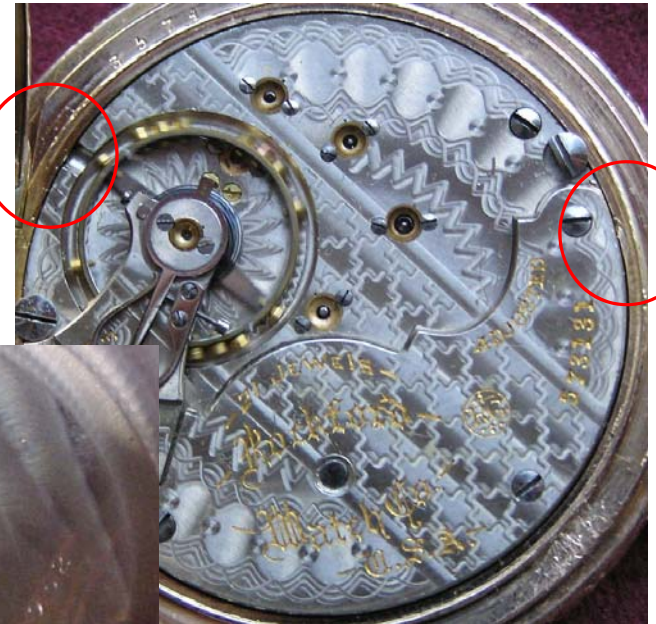
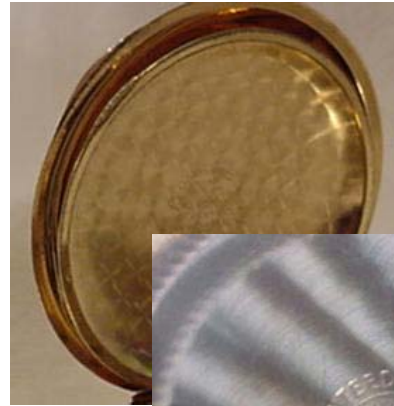
Case – Observations

- Complete – bow, stem, covers, bezel
- Material – gold, silver, coin, aluminum, etc.
- Detail – Complexity of design
- Wear – Experienced judgment helpful
- Scratches – major, minor, detracting, not noticeable
- Dents/Dings – major, minor, detracting, repairable
- Crystal – present/missing, damage, minor scratches, glue marks



Case - Interior

- Swirls and Scratches
- Case Screw Marks
- Graffiti
- Metal Content ID
- Company Logo
- Crystal (hunter)



Case - Hinges And Cover

- Closing – front latching, parallel seams
- Snap – rear hinged cover
- Open To 90 Degrees – hunter style
- Threads- stripped, cross threaded



Dial

- Composition – porcelain, glass, metal etc.
- Chips and missing material
- Hairlines and cracks
- Plain or fancy
- Overall condition



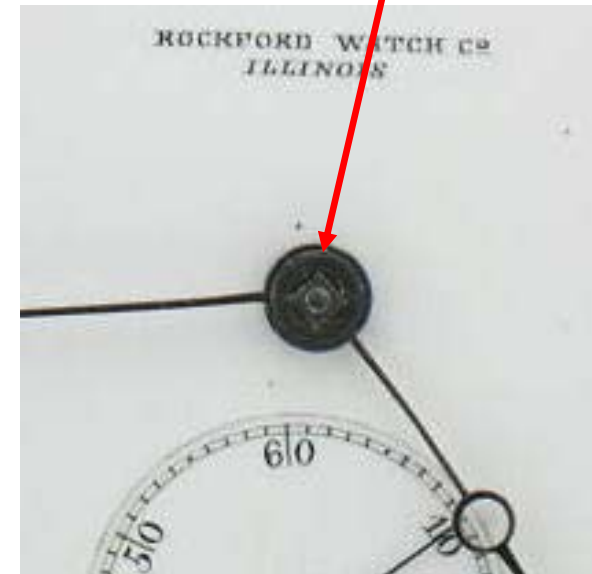
Hands

- Correct style for model
- Rust
- Breakage or bent
- Missing
- Alignment



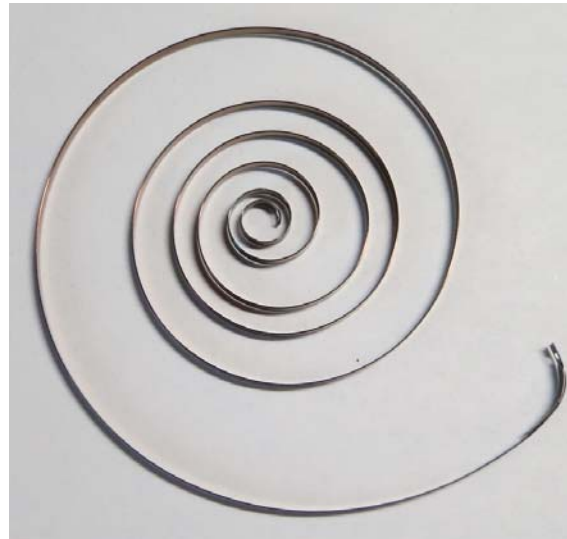
Hand Movement When Setting

- Smooth
- Tight
- Jerky



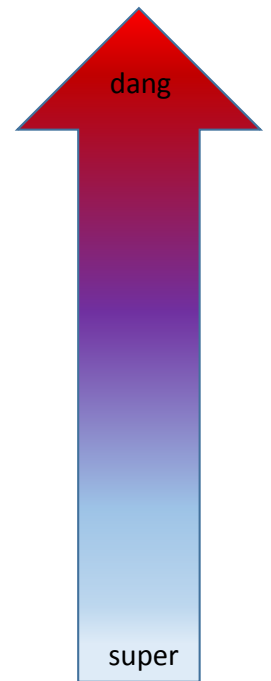
Winding

- Ease Of Travel (hard or easy to turn)
- Sound Or Feel of Gear Meshing
- Crown Travel from case (up/down, back/forth)



Movement (mechanism)

- Does Not Run
- Sluggish
- Runs
- Runs But Not Tested For Time
- Runs But Loses 10 Or So Minutes A Day
- Runs With Good Movement
- Excellent Runner But Not Tested
- Excellent Time Keeper And Differs In Only Seconds per Month



Movement - Overall Condition

- Plate Finish
- Scratches
- Jewels (presence, condition, type)
- Damaged Parts
- Missing Parts



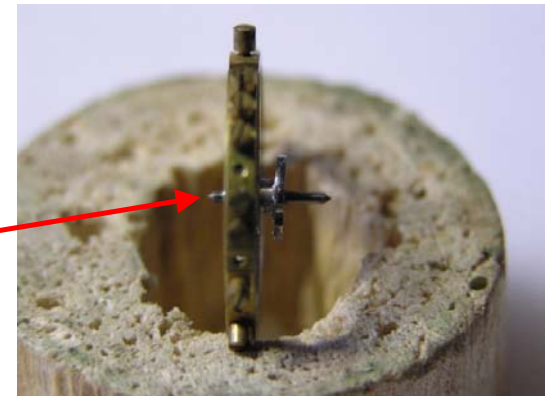
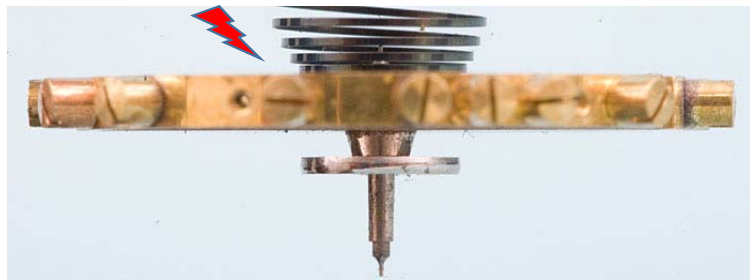
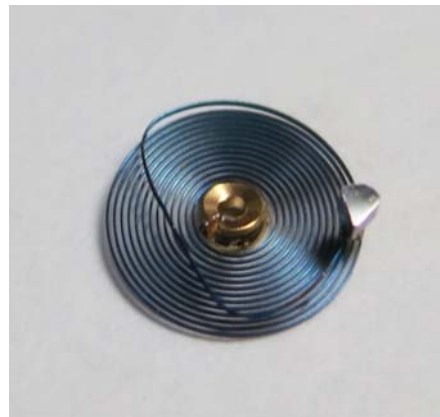
Movement – Balance Area

- Balance, cock (serial number)
- regulator, micro adjust
- Action – rotation, fast or slow
- Sound



Movement – Balance and Hair Spring

- Physical Condition
- Screw pairs
- Rust?
- Pinions – positional running
- Roller jewel – free swinging



Movement - Extras

- Plate design
- Grade
- Jewel Count
- Patents
- PL (private label)
- other



Repair/Restoration

- Expected Final Condition
- Costs Associated With Repair
- Costs Associated With Restoration



Should I Bid/Buy

- Assuming you still want it after your assessment
- Have you made a comparison of sales of comparable items?
- What's In Yer Wallet?
- Purchase Or Bid Price + Repair/Restoration Costs
- Final Value

Wha hooo, I got it!



Thank you