

CLOCK GEAR TEETH REPAIR

by Del Rolison

Typical Gear Teeth Damage

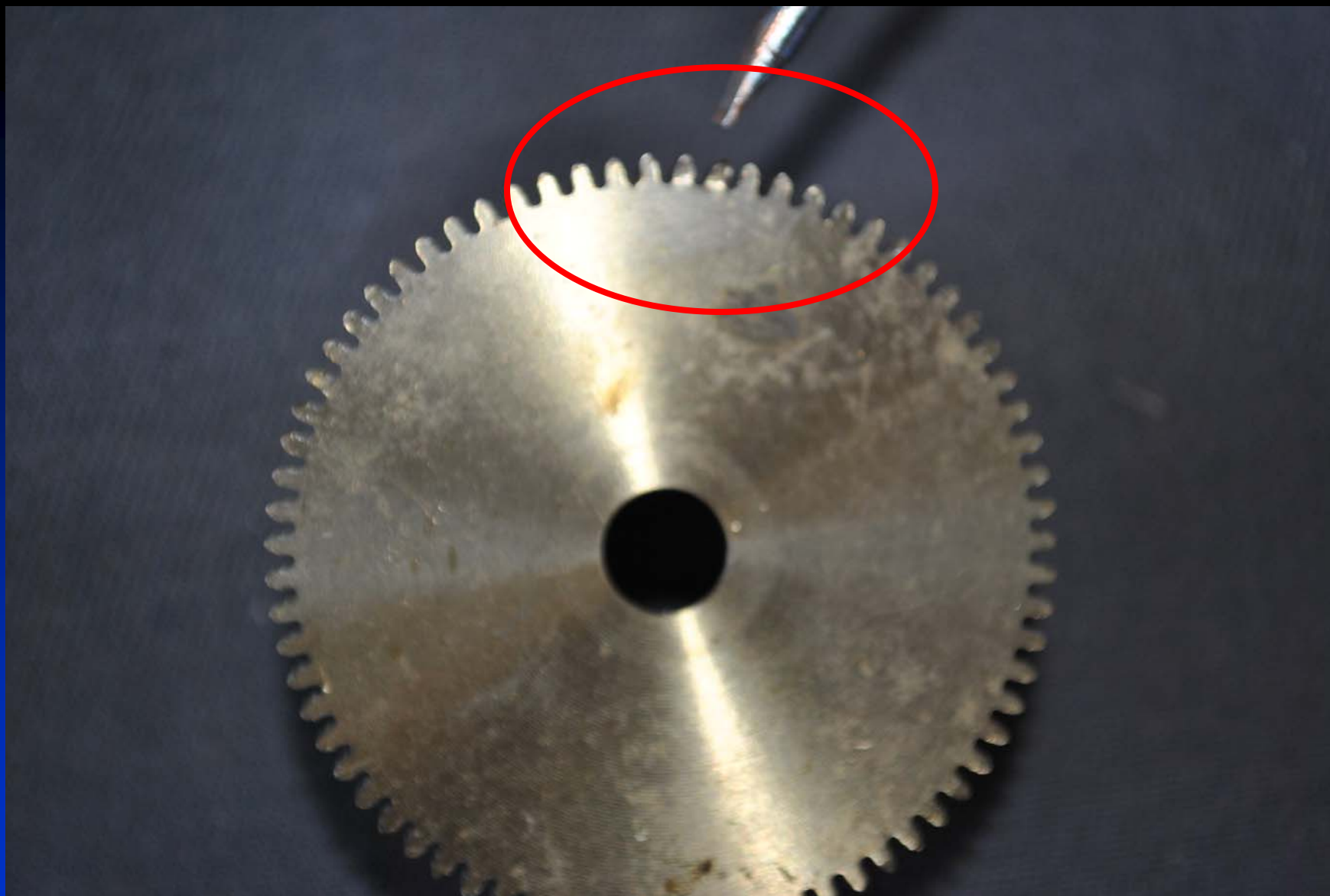


My Name Is DEL ROLISON
I Am A Retired Machinist With 52 Years
Experience In All Types Of Machining

Today We Will Be Discussing Different Methods
That I Have Used In Repair Of Bad Gear Teeth

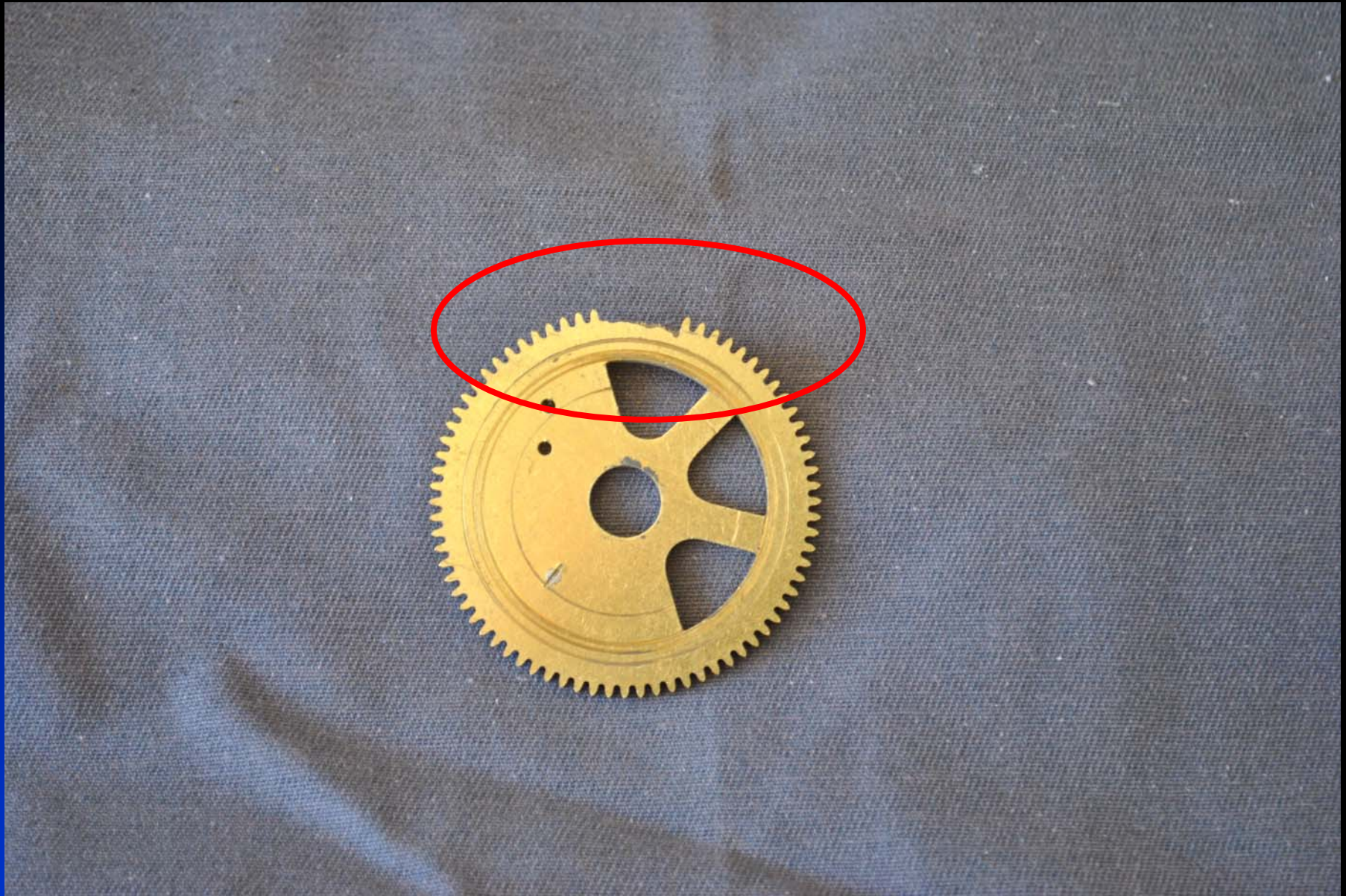
Topics of Discussion

- One Method Is To Insert Bad Teeth With A New Piece Of Brass And Solder In Place Then File Them To A Working Profile
- The Other Method Will Be To Silver Solder Up Bad Teeth, Cut On A Lathe Then File Them To A Working Profile





10/31/2011



10/31/2011



10/31/2011



10/31/2011



10/31/2011



10/31/2011

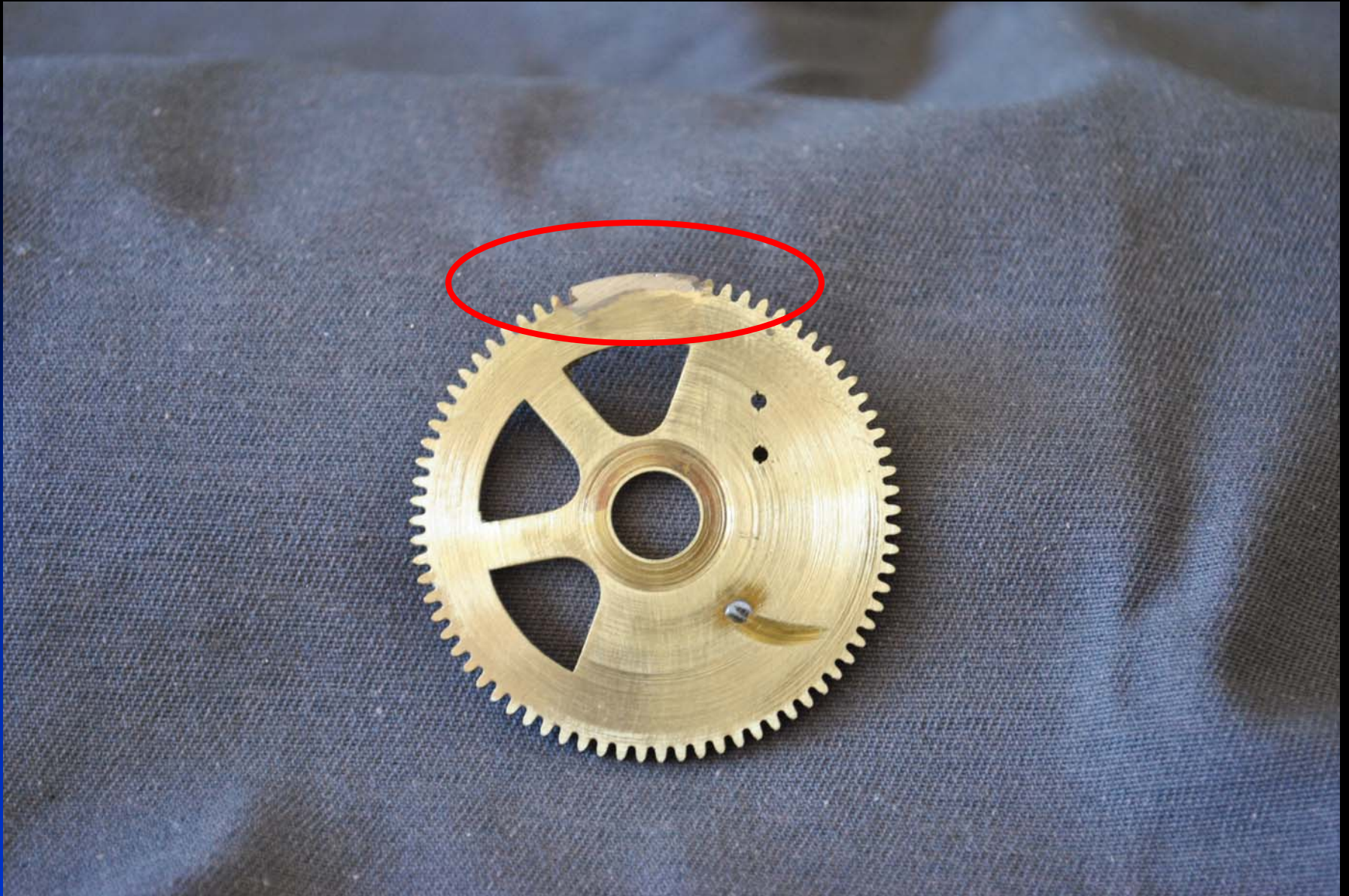


10/31/2011



10/31/2011

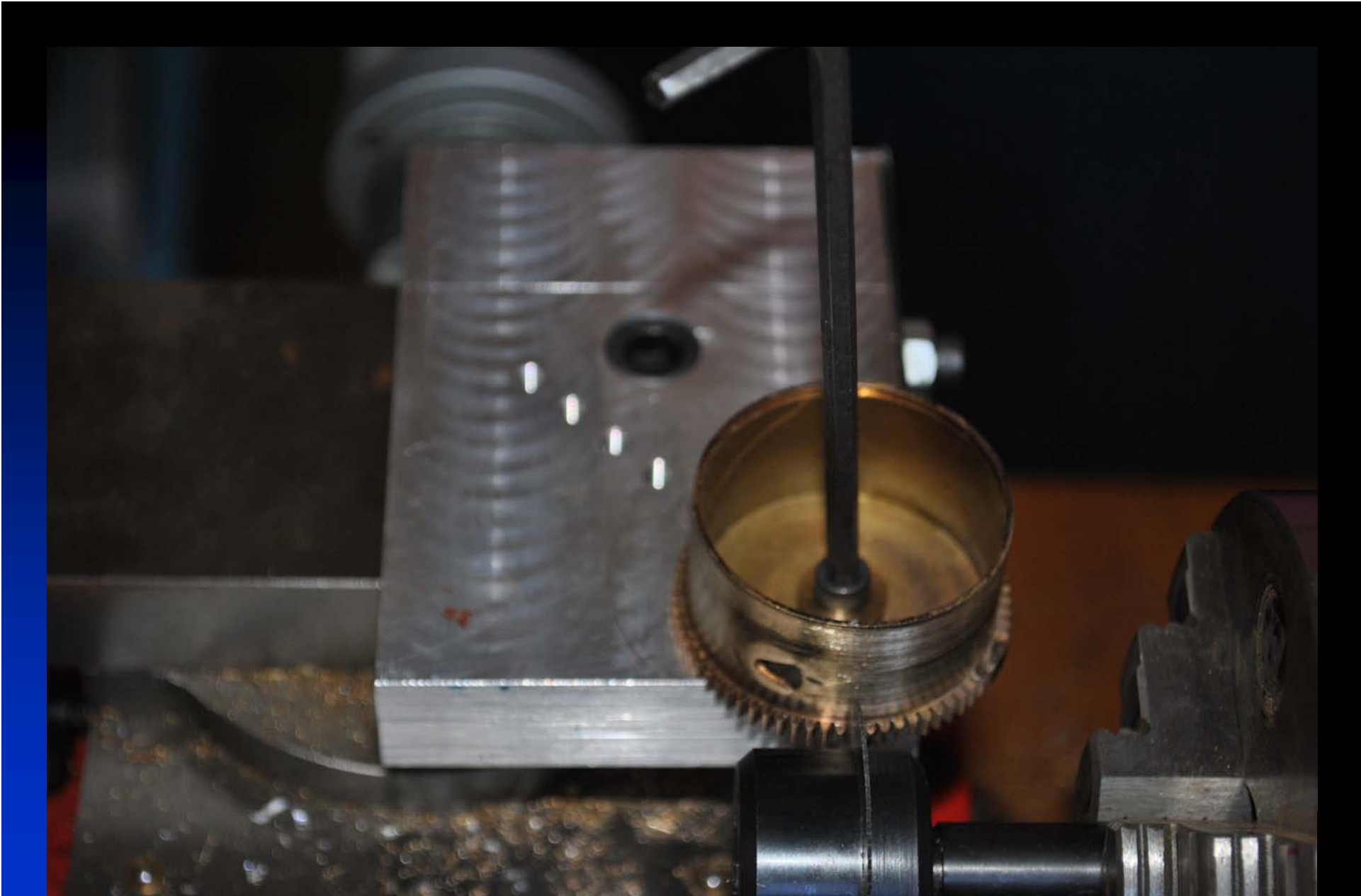
13



Topic One

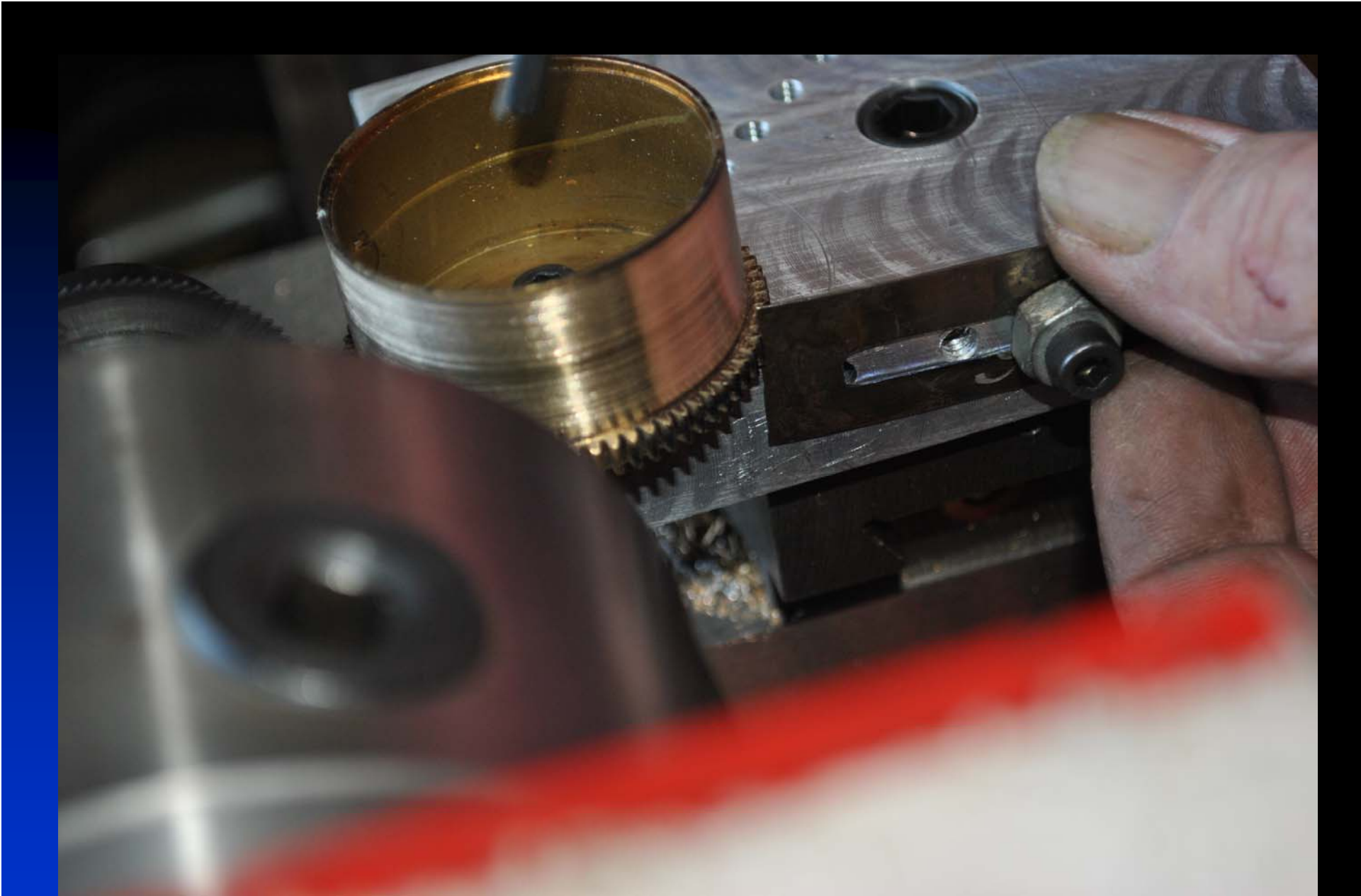
Using A Fixture To Cut Teeth On A Lathe Is Accurate And Less hand Work To Make A Neat Workable Part In Less Time

- How it relates to your audience

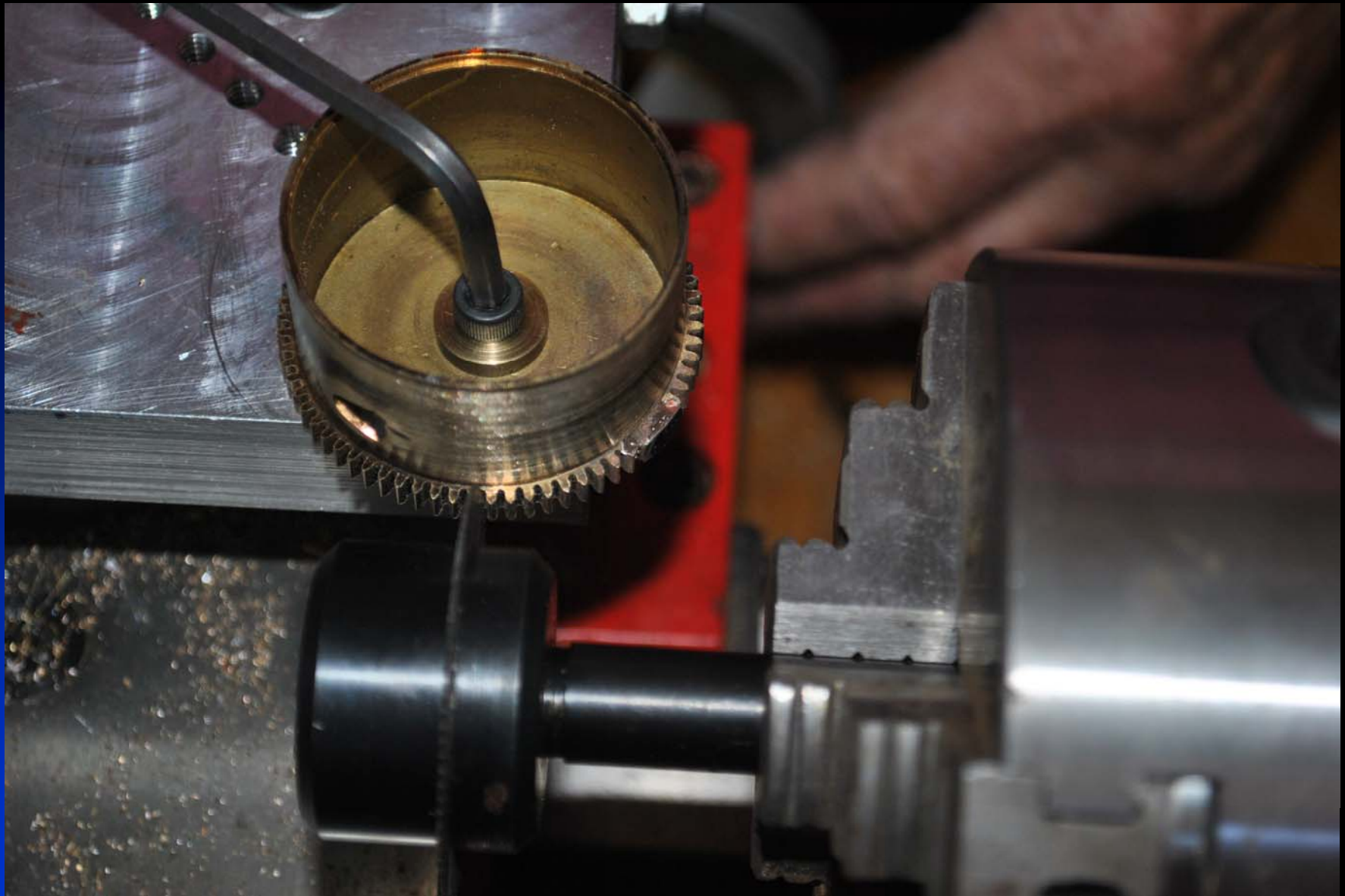


10/31/2011

16

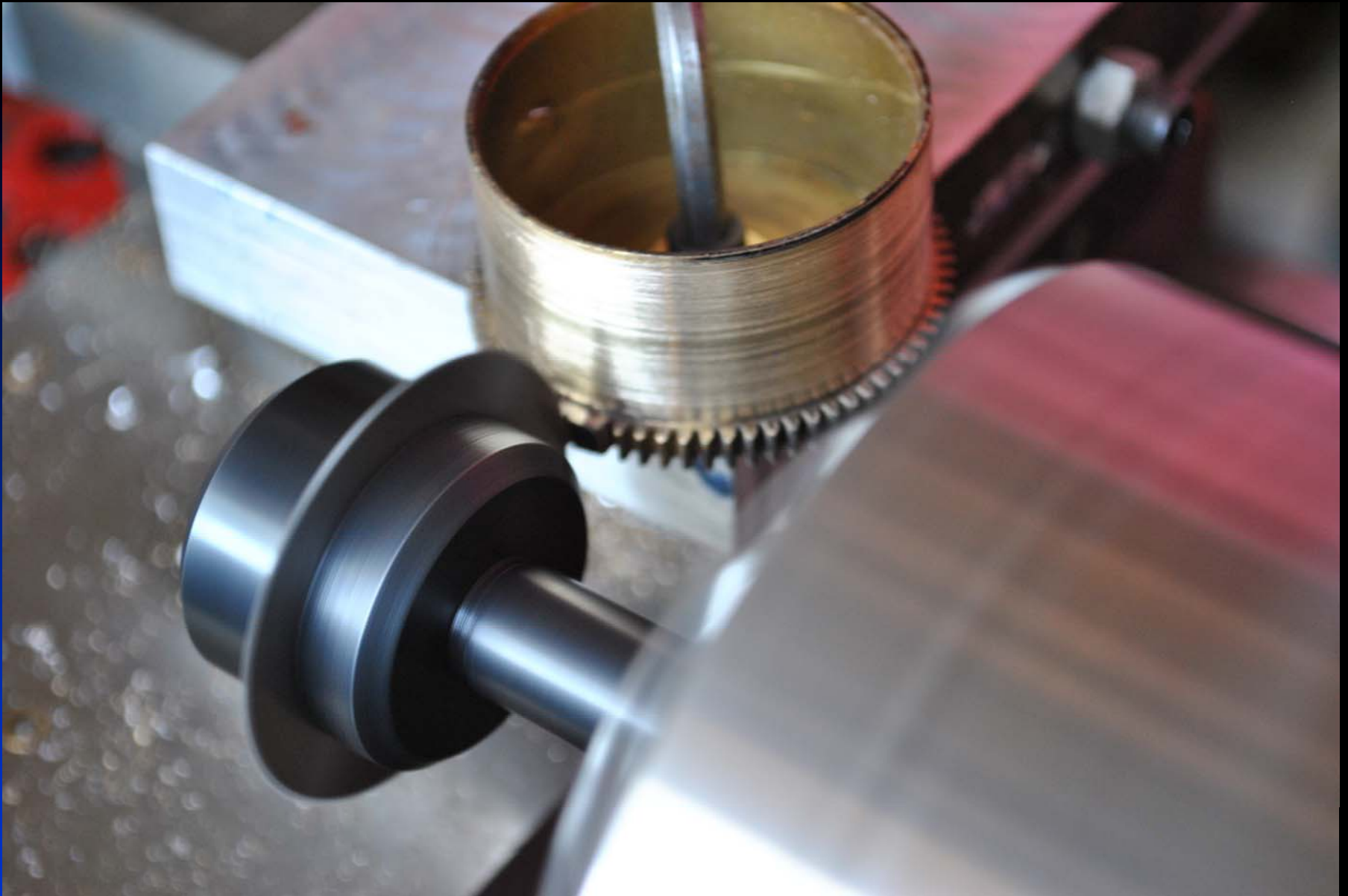


10/31/2011



10/31/2011

18



10/31/2011

Topic Two

Completing The Repair Requires
Some Hand Filing To Get The
Correct Profile Of The Teeth So It
Runs Freely



10/31/2011



10/31/2011